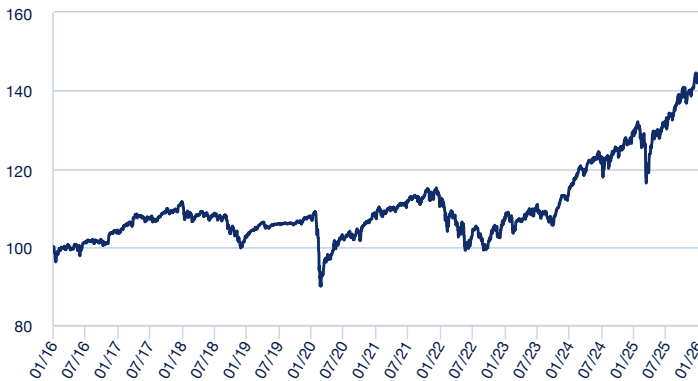


**INVESTMENT POLICY**

Its vocation is defined as global, locating investments both in the markets of those countries that are part of the European Union and the European Free Trade Association - known by its acronym in English "EFTA" and currently composed of Norway, Iceland, Switzerland and Liechtenstein- as well as in the United States, Canada and Japan and in emerging countries without geographical restriction. The distribution of the investment between the fixed and variable income markets is not predetermined in advance, oscillating according to the expected evolution of each of them. Investments in fixed income will be made both in state public debt and in securities issued by supranational entities, autonomous communities and local corporations. Likewise, the SICAV will invest normally and without a preset limit in private fixed income assets. A more complete description of the investment policy can be found in the Key Investor Information Document (DIF) available at [www.sabadellassetmanagement.com](http://www.sabadellassetmanagement.com).

**UNIT CLASS PERFORMANCE (NET ASSET VALUE)**



The Fund is actively managed against a benchmark and seeks to outperform the 1% MSCI EM (EMERGING MARKETS) + 12% EURO STOXX 50 + 60% BLOOMBERG EURO CORPORATE BONDS 1-5 YEARS + 6% S&P 500 + 20% BLOOMBERG EURO GOVERNMENT 1-3 YRS TERM + 1% TOPIX Index. The Fund is primarily exposed to benchmark issuers. However, management of the Fund is discretionary and will be in issuers not included in the benchmark. The Fund monitors risk exposure relative to the benchmark, even if the deviation from the benchmark is significant.

**PORTFOLIO STRUCTURE AT REPORTING DATE (SUBJECT TO CHANGE)**

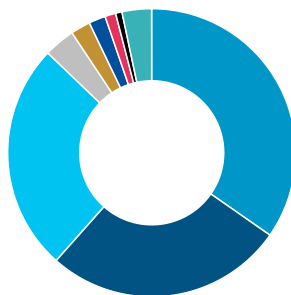
<b>Number of holdings</b>	74
<b>Duration in years</b>	0.73
<b>Top ten holdings</b>	
FUT.EUR/USD MINI 03/26 CME (USD)	7.02%
ETF.Am Stoxx Eur600 UCITS ETF Acc (PAR)	6.73%
ETF.ISHARES DAX	4.04%
ETF.ISHR EUR600 IND GDS&SERV (DE)	3.76%
AC.ASML HOLDING NV	3.73%
PART.AXA IM FIIS-EUR SH DUR H-AEA	3.57%
ETF.ISHARES EURO CORP 1-5YR (LDN)	3.55%
AC.ALPHABET INC CL C (USD)	3.46%
AC.NVIDIA CORP (USD)	3.41%
AC.APPLE INC (USD)	3.17%

Reference to portfolio holdings should not be considered as a recommendation to buy or sell any security and securities are subject to risk.

**Portfolio structure at reporting date (Subject to change)**

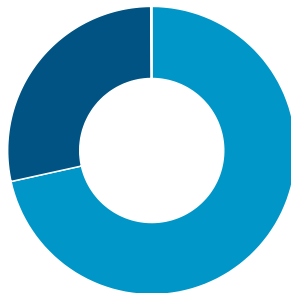
**Distribution by asset type**

- European Equity: 34.69%
- North American Equity: 26.86%
- Euro Fixed income: 25.63%
- Global Fixed Income: 3.47%
- Other: 2.21%
- Alternative Investment: 1.88%
- Global Emerging Equity: 1.21%
- North American Fixed Income: 0.71%
- Cash: 3.32%



**Currency**

- EUR: 71.56%
- USD: 28.34%
- GBP: 0.10%
- DKK: 0.00%



**SICAV KEY FACTS**

<b>Category</b>	GLOBAL
<b>ISIN</b>	ES0155955034
<b>Date of creation</b>	29/11/1966
<b>Minimum investment</b>	EUR
<b>Reference currency</b>	EUR
<b>AUM</b>	
<b>Asset base</b>	14,273,239.05
<b>Net Asset Value (NAV)</b>	77.44

**PERFORMANCE**

**Annualised returns**

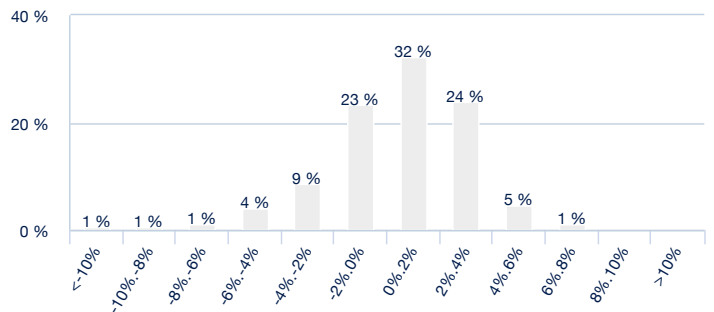
<b>2016</b>	0.57%
<b>2017</b>	5.25%
<b>2018</b>	-7.51%
<b>2019</b>	6.30%
<b>2020</b>	0.05%
<b>2021</b>	6.80%
<b>2022</b>	-10.60%
<b>2023</b>	10.65%
<b>2024</b>	11.74%
<b>2025</b>	11.23%

**Cumulative returns**

<b>YTD</b>	1.78%
<b>1 Month</b>	1.78%
<b>3 Months</b>	1.97%
<b>6 Months</b>	7.81%
<b>12 Months</b>	10.13%

Past performance is not a reliable indicator of future performance.

**Net monthly return frequency distribution**



X-axis presents returns by intervals. Y-axis presents number of months (in percentage). This graph represents the number of months in which a monthly return, either positive or negative, has been achieved, in percentage returns during the last 10 years or the beginning of the activity.

**RISK & REWARD STATISTICS (Last 36 months)**

**Return**

<b>% Months with positive return</b>	72.22%
<b>Best monthly return</b>	4.26%
<b>Worst monthly return</b>	-4.05%

**Risk**

<b>Fund volatility</b>	8.21%
<b>Sharpe Ratio</b>	0.80

**Risk Indicator**

1 2 **3** 4 5 6 7

The risk indicator represents the risk and return profile as presented in the KID. The lower risk level does not imply no risk. The risk indicator is not guaranteed and may change over time. Detailed information on the Fund's risks can be found in its prospectus.

**Important Information**

This is a commercial communication. Please refer to the prospectus and Key Information Document before making any final investment decision.

This material is intended for retail customers.

This material contains information on Investment Funds constituted in Spain (the "Funds"), supervised and authorized for distribution by the National Securities Market Commission (CNMV). The management company of the Funds is Sabadell Asset Management, S.A., S.G.I.I.C., S.U. (hereinafter "Sabadell Asset Management"), registered with the CNMV under number 58 and with registered office at Paseo de la Castellana number 1, 28046 Madrid.

This material is for informational purposes only, does not constitute a recommendation, financial analysis or investment advice, nor does it constitute a request, invitation or offer to buy or sell Funds.

This material has not been submitted to the approval of the CNMV and is intended exclusively for publication in Spanish jurisdiction and for persons who can receive it without violating the applicable legal or regulatory requirements. The information contained in this material may not be copied, reproduced, modified or distributed to third parties in any other country without the prior written authorization of Sabadell Asset Management.

Investing involves risks. An investor's decision to invest in the Funds should take into account all the characteristics or objectives of the Funds. **Past returns are neither a guarantee nor an indicator for future results.** The return on the investment and the value of the principal of an investment in the Funds or in another investment product may rise or fall and result in the loss of the amount initially invested. All investors should seek professional advice before making any investment decision, in order to determine the risks associated with the investment and its suitability. It is the responsibility of investors to read the existing legal documents, in particular the current prospectus of each Fund. Subscriptions to the Funds will only be accepted on the basis of current legal documents, i.e. their most recent prospectus and/or the Key Information Document which, together with the latest annual and half-yearly reports, can be obtained free of charge at Sabadell Asset Management's registered office. Information on the risks, costs and expenditure of the Funds can be obtained in the Key Information Document or in the prospectus. Profitability data does not take into account fees and costs associated with the issuance and redemption of Fund shares.

Information on sustainability issues can be found in the Amundi Responsible Investment Policy or the Amundi Sustainable Finance Statement available at: <https://about.amundi.com/Metanav-Footer/Footer/Quick-Links/Legal-documentation> and in the Sustainability Annex of the respective Fund prospectuses available at [sabadellassetmanagement.com](https://www.sabadellassetmanagement.com).

Shares/units may only be acquired on the basis of the latest prospectus, the Key Information Document and other documentation in force, which may be obtained free of charge from the registered office of Sabadell Asset Management, or on the website [sabadellassetmanagement.com](https://www.sabadellassetmanagement.com).

This information is not intended for distribution or offering of securities or services in the United States, territories under its jurisdiction, or to U.S. persons or entities. The Funds have not been registered in the United States.

This material is based on sources that Sabadell Asset Management considers reliable at the time of publication. Data, opinions and analyzes may be modified without prior notice. Sabadell Asset Management does not accept any responsibility, either direct or indirect, that may arise from the use of the information contained in this material. Sabadell Asset Management is not responsible for any decisions or investments made on the basis of the information contained in this material.